



# Windows 11 ABC Client Laptop Setup for Remote Shadow RDP

## Contents

Configuring the client laptop when it is switched on for the first time.....	3
Section 1 Configuring the client laptop when it is switched on for the first time .....	3
WARNING 1.1 .....	3
Section 2 Configuring the user account .....	5
Section 3 Configuring the computer power settings .....	7
Client (Laptop) configurations .....	12
Section 1 Client IP Configurations.....	12
Section 2 Setting up Client Shadow RDP Configuration.....	17
Installing USB over Ethernet on the Client side .....	17
Setting up the New RDP Icon on the Client PC .....	22
Testing Shadow RDP .....	24
Testing Client Connection with Gating Kit .....	26
Revision History .....	28

# Configuring the client laptop when it is switched on for the first time

## Section 1 Configuring the client laptop when it is switched on for the first time

*This is the procedure to configure the Active Breathing Coordinator™ laptop when it is switched on for the first time.*

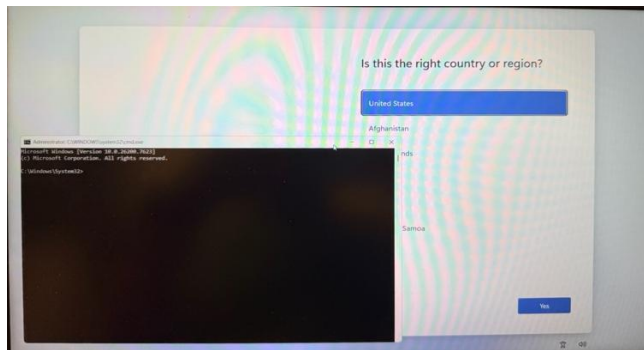
If it is necessary, you must configure the computer when it is switched on for the first time.



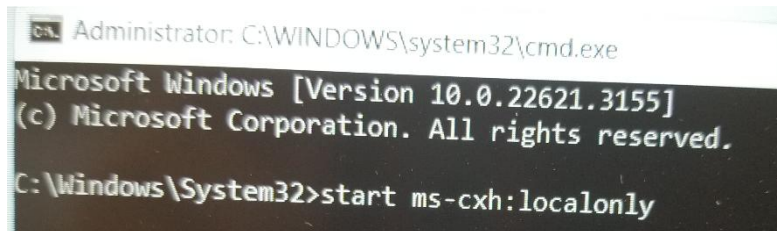
### WARNING 1.1

**Do not install software which is not approved by Elekta. The result can be system malfunctions. If you ignore this warning, you can cause clinical mistreatment.**

- 1 Hold Shift and FN if applicable to press F10 on the keyboard.



- 2 Command line Box type “start ms-cxh:localonly” and press enter.



- 3 Blue window appears to let you fill in the following information.
  - Who’s going to use this PC? – Type “ABC administrator”
  - Make it secure – Type “eletka”
  - Re-enter password – “eletka”
  - In case you forget your password – select any three question and type “blank”

Who's going to use this PC?

ABC administrator

Make it secure.

•••••

•••••

In case you forget your password

What was your first pet's name? ▾

blank I

What's the name of the city where yo ▾

blank

What was your childhood nickname? ▾

blank X

4 Once finished select Next and laptop will go through profile creation.

5 Leave all settings as is on “Choose privacy settings for your device” and click **Next** button twice, then click **Accept** button

Choose privacy settings for your device

Microsoft puts you in control of your privacy. Choose your settings, then select **Accept** to save them. You can change these settings at any time.

**Location**  
Get location-based experiences like directions and weather. Let Windows and apps request your location and allow Microsoft to use your location data to improve location services.  
 Yes

**Find my device**  
Turn on Find my device and use your device's location data to help you find your device if you lose it. You must sign in to Windows with your Microsoft account to use this feature.  
 Yes

**Diagnostic data**  
Send info about the websites you browse and how you use apps and features, plus additional info about device health, device activity, and enhanced error reporting. Required diagnostic data will always be included when you choose to send Optional diagnostic data.  
 Include Optional

Learn more **Next**

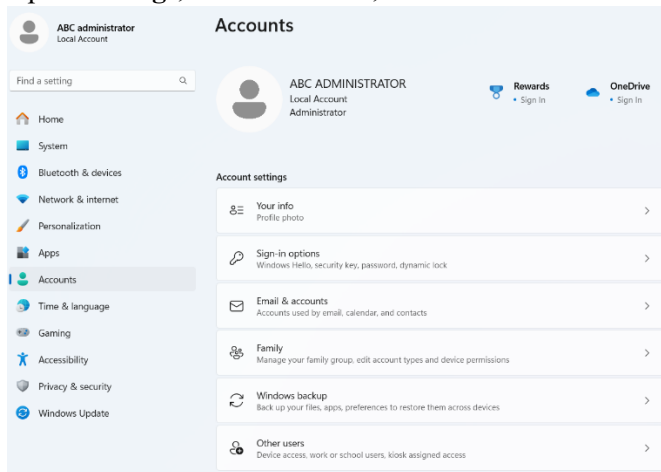
## Section 2 Configuring the user account

*This is the procedure to configure the user account on the Active Breathing Coordinator™ laptop.*

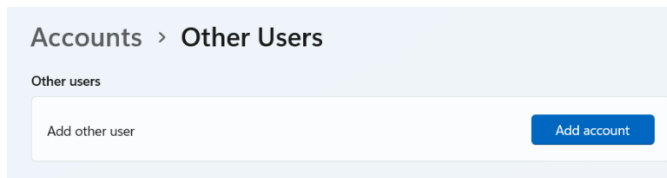
- 1 The laptop will be configured with two accounts, the ABC administrator and ABC user accounts (see [Table 1.1](#)).

User name	Type	Password
ABC administrator	Administrator	elekta
ABC	Standard user	abc

- 2 Press the **Windows** key on the keyboard.
- 3 Open **Settings**, click **Accounts**, and select **Other Users**.



- 4 Select **Add account**.



- 5 In the “**Who’s going to use this PC**” text box, type **ABC**.
- 6 Type **abc** in the password text boxes.

## Create a user for this PC

If this account is for a child or teenager, consider selecting **Back** and creating a Microsoft account. When younger family members log in with a Microsoft account, they'll have privacy protections focused on their age.

If you want to use a password, choose something that will be easy for you to remember but hard for others to guess.

Who's going to use this PC?

Make it secure.

In case you forget your password

Next

- 7 In the section “**In case you forgot your password**”, select any three questions, the answers “**abc**”.

Microsoft account ×

Make it secure.

In case you forget your password

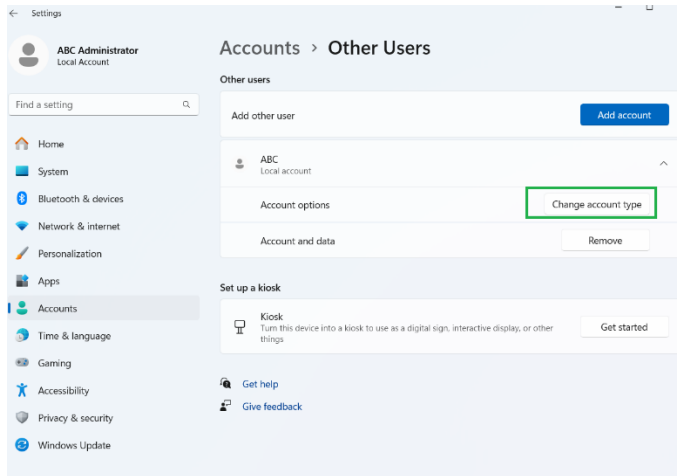
What was your first pet's name? ▾

What's the name of the city where you were born? ▾

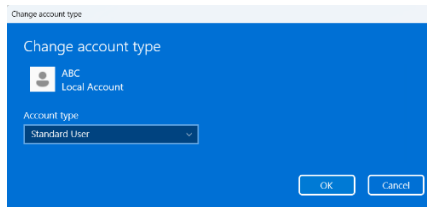
What was your childhood nickname? ▾

Next

- 8 Click **Next**, and verify the ABC user is a Standard User by clicking **Change account type**.



**9 Click OK.**



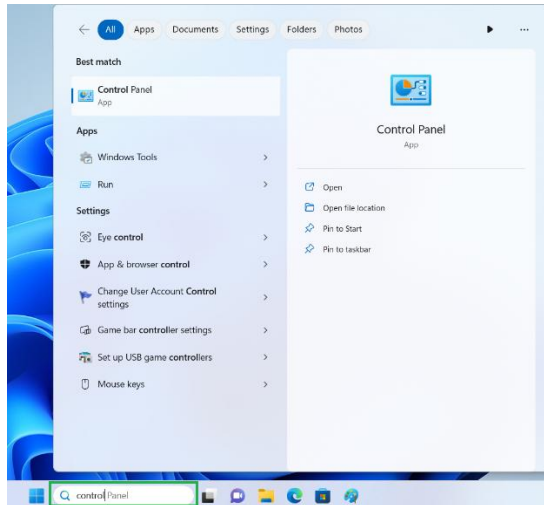
**10 There should be two users – ABC administrator and ABC.**

## Section 3 Configuring the computer power settings

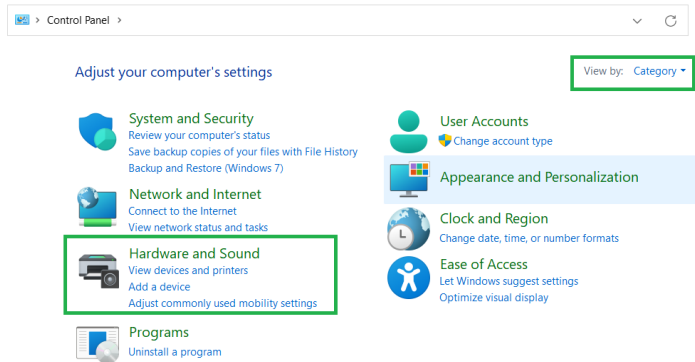
---

*This is the procedure to configure the power settings on the Active Breathing Coordinator™ laptop. The laptop power settings must be correctly configured.*

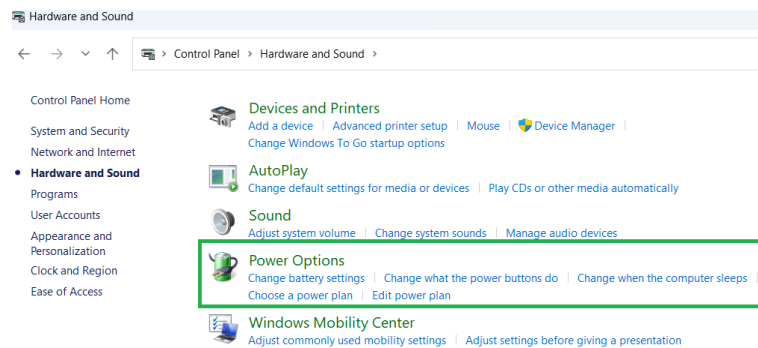
- 1 Log in as the ABC administrator.**
- 2 Open the Control Panel by typing control panel on the taskbar text box.**



### 3 Make sure that **View By** is set to **Category**. Select **Hardware and Sound**.



### 4 Select **Power Options**.



### 5 Click **Change plan settings**.

## Choose or customize a power plan

A power plan is a collection of hardware and system settings (like display brightness, sleep, etc.) that manages how your computer uses power. [Tell me more about power plans](#)

Selected plan

**Balanced**

[Change plan settings](#)

Automatically balances performance with energy consumption on capable hardware.

## 6 Set **Turn off the Display** and **Put the computer to sleep** to **Never** both under **“On battery”** and **“Plugged in”**. Use pull down to select **Never**.

[Change settings for the plan: Balanced](#)

Choose the sleep and display settings that you want your computer to use.

On battery Plugged in

Turn off the display: Never Never

Put the computer to sleep: Never Never

[Change advanced power settings](#)

[Restore default settings for this plan](#)

Save changes

Cancel

## 7 Click **Change advanced power settings**.

[Change settings for the plan: Balanced](#)

Choose the sleep and display settings that you want your computer to use.

On battery Plugged in

Turn off the display: Never Never

Put the computer to sleep: Never Never

[Change advanced power settings](#)

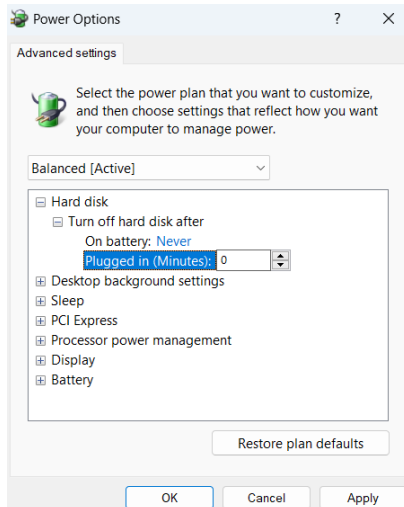
[Restore default settings for this plan](#)

Save changes

Cancel

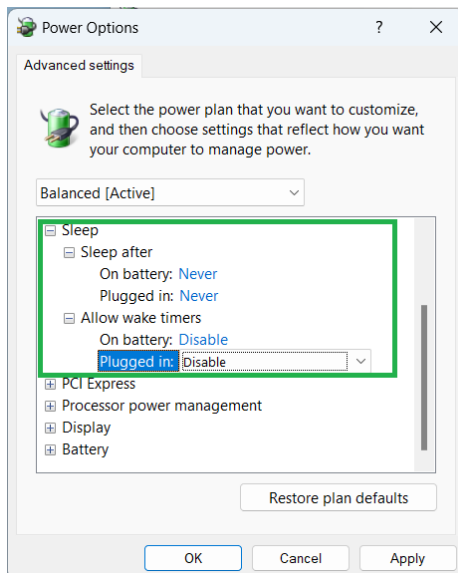
## 8 In the pane of the **Power Options** window, select **Hard disk** > **Turn off hard disk after**.

## 9 Set the **On battery** and **Plugged in (Minutes)** both to **Never**. Enter “0” in the text box to set to **Never**.



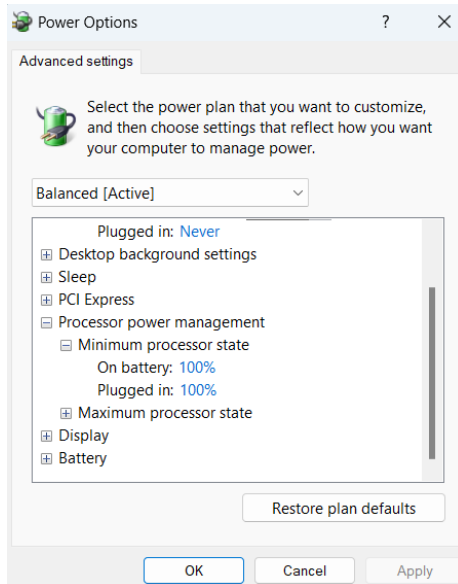
**10** In the bottom pane of the **Power Options** window, select **Sleep > Sleep after**. Set the **On battery** and **Plugged in (Minutes)** both to **Never**.

**11** In the bottom pane of the **Power Options** window, select **Sleep > Allow wake timers**. Set the **On battery** and **Plugged in (Minutes)** both to **Disable**.



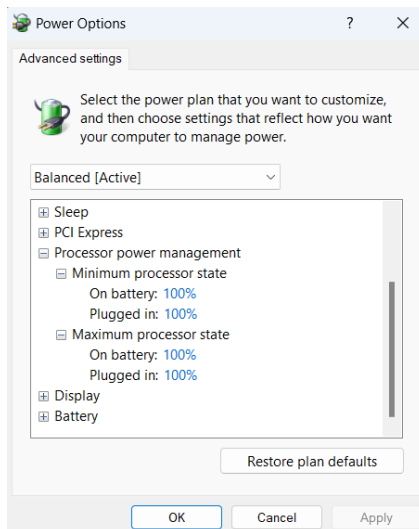
**12** In the bottom pane of the **Power Options** window, select **Processor power management > Minimum processor state**.

**13** Set the **On battery** and **Plugged in (Minutes)** both to **100%**.



**14** In the bottom pane of the **Power Options** window, select **Processor power management** > **Maximum processor state**.

**15** Set the **On battery** and **Plugged in (Minutes)** both to **100%**.



**16** Click **OK**.

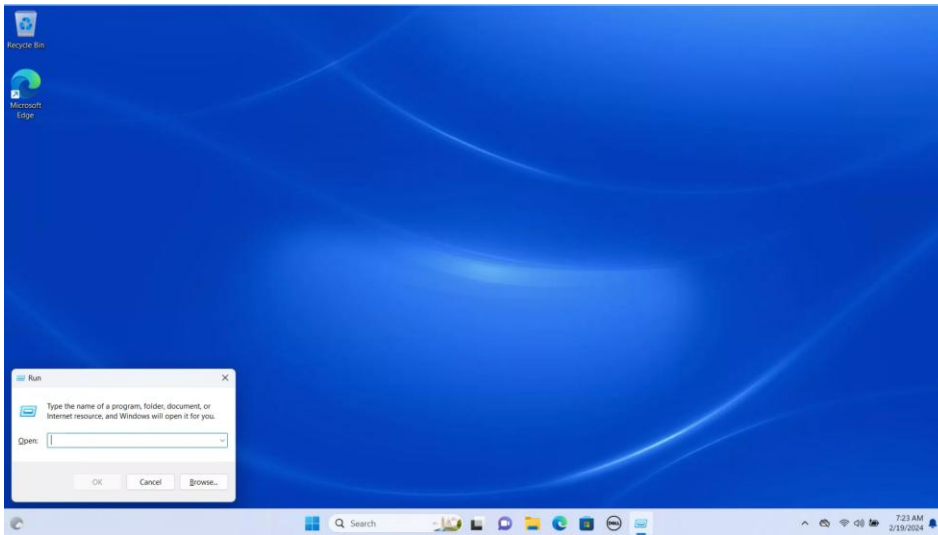
The system makes the changes.

# Client (Laptop) configurations

## Section 1 Client IP Configurations

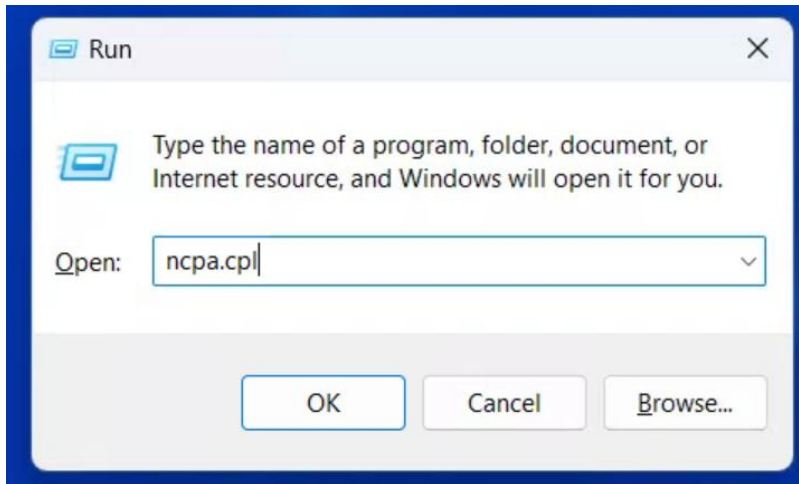
Step 1.

- Log in as the **ABC Administrator** user.
- While at the desktop, hold down **Windows** key, press the “R” on the keyboard. A **Run** dialog box opens.



Step 2.

- Type the following “**nca.cpl**” and press **Enter** on the keyboard or select “**OK**”.



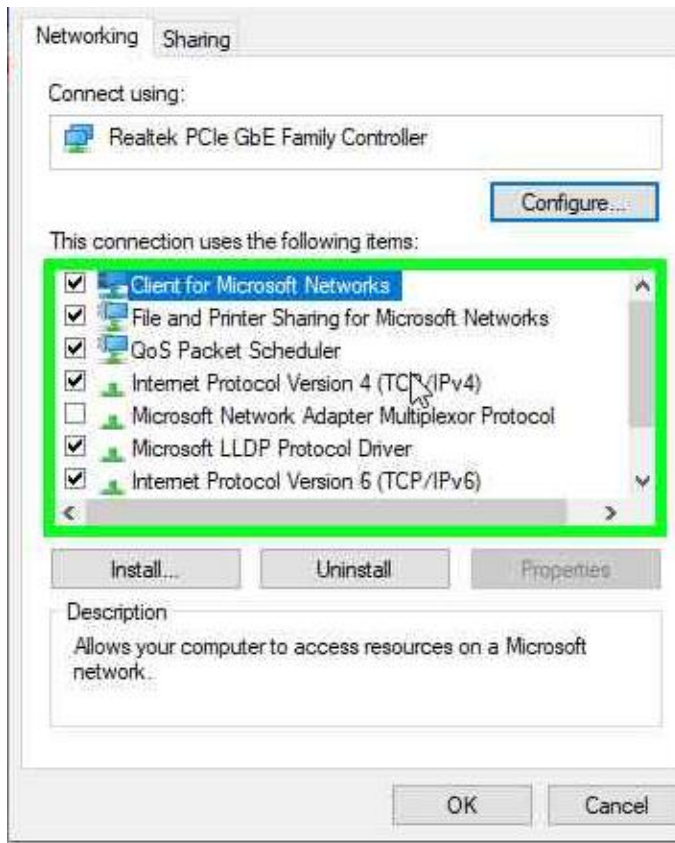
Step 3.

- Double left click “**Ethernet**” and select “**Properties**”.



Step 4.

- Select and double left click “**Internet Protocol Version 4 (TCP/IPv4)**”.



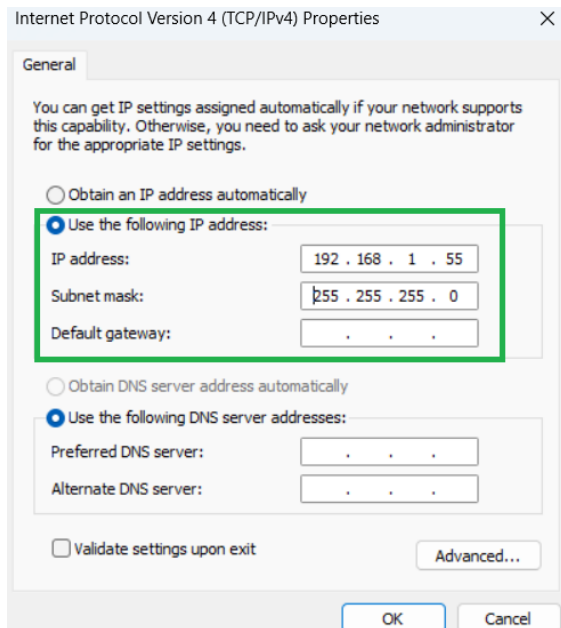
Step 5.

- Switch Radio Button to “Use the following IP address”.



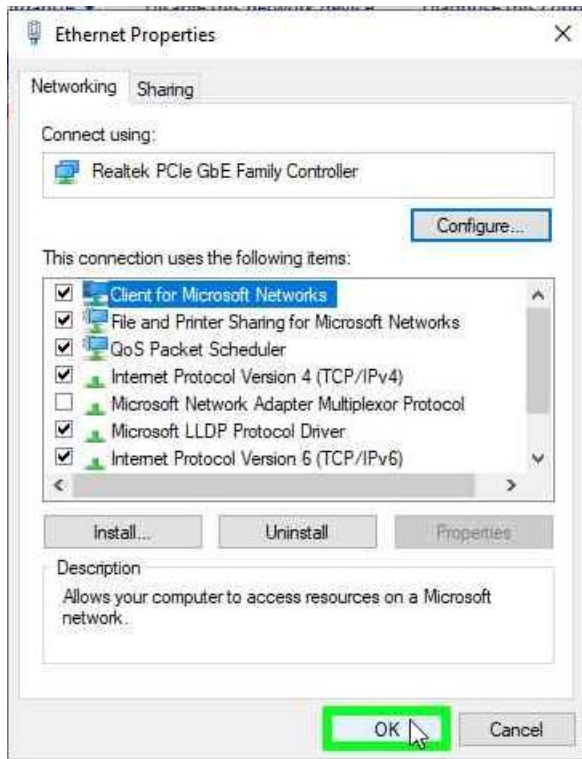
Step 6.

- Fill in the IP Address: “**192.168.1.55**” Subnet Mask:**255.255.255.0**
- Click **Ok**



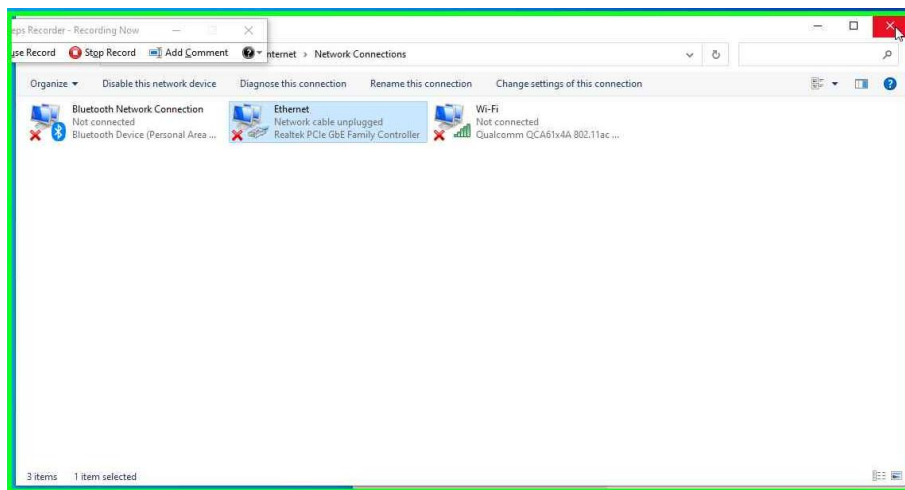
Step 7.

- Click “**OK**” to close.



Step 8.

- Close the window by hitting the X on the upper right.

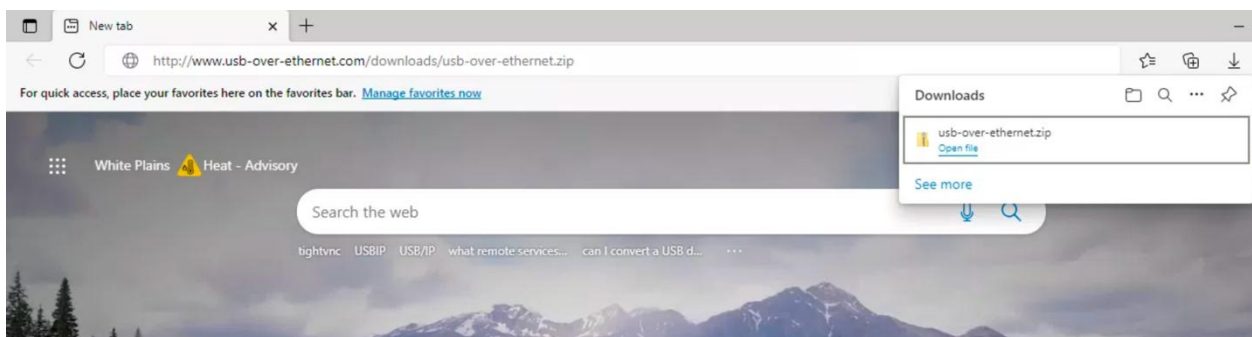
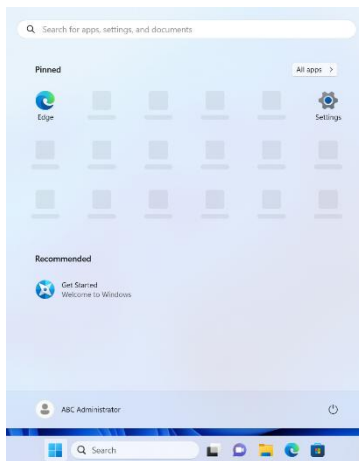


## Section 2 Setting up Client Shadow RDP Configuration Installing USB over Ethernet on the Client side

Prepare the following:

- Access to the internet.
- Connect Gating kit to the laptop via a USB cable.
- License key for the USB Over Ethernet.
- \*\* Contact Aktina [Support@aktina.com](mailto:Support@aktina.com) for USB for Ethernet Software Product key\*\*

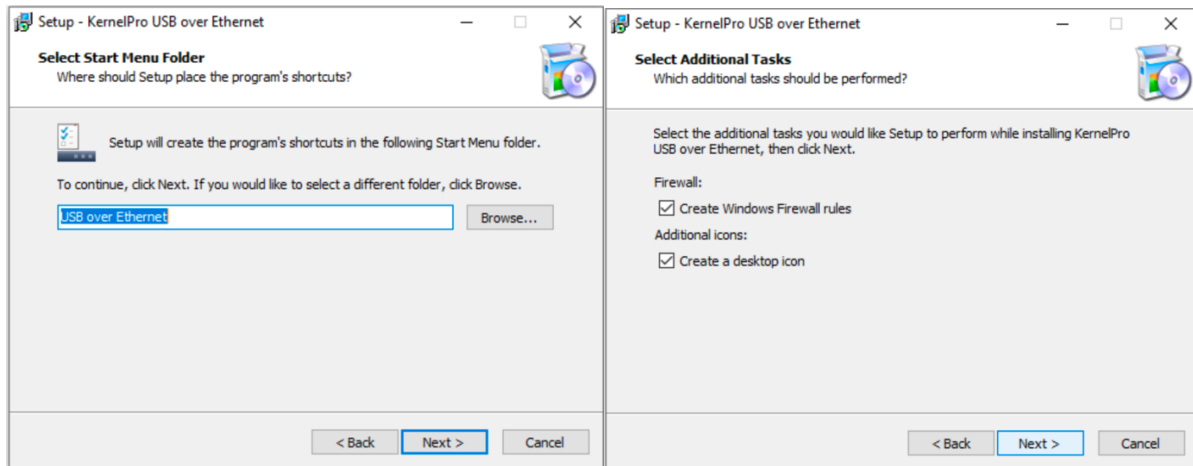
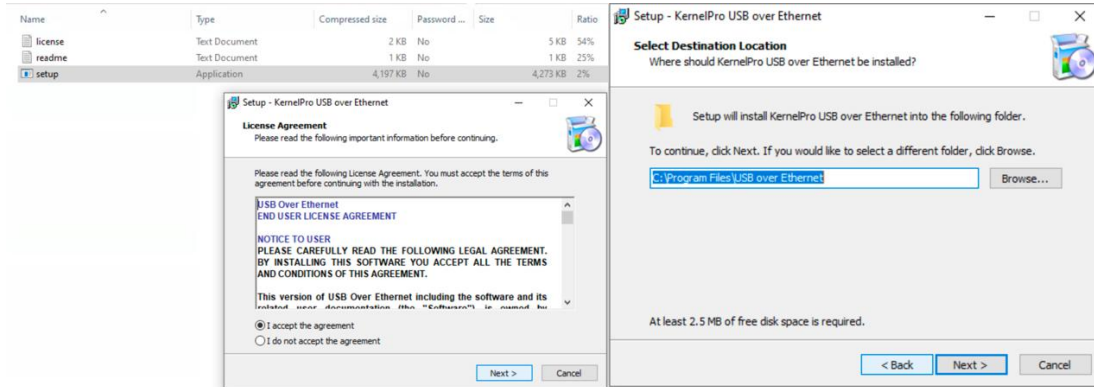
Step 1.

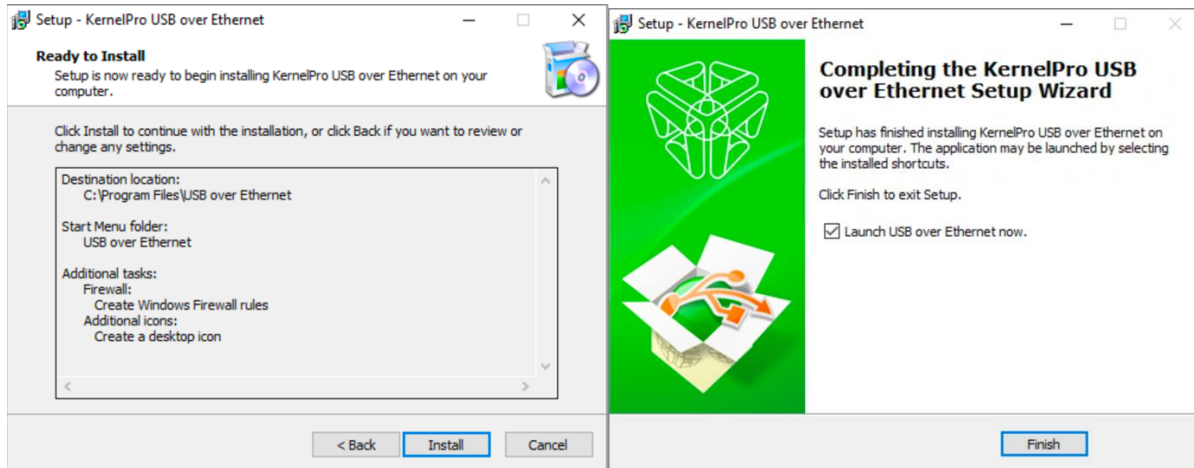


- Log in as the **ABC Administrator**.
- Press the **Windows** Key and select "**Edge**" on the Pinned list.
- Double click the **Edge** icon.
- If prompted by "**Welcome to Microsoft Edge**", select **Start without your data**, click **Confirm and continue**, click **Continue without this data** and then click **Confirm and start browsing**.
- While connected to the Internet or downloading from another PC with internet access. Go to the following URL link: **<http://www.usb-over-ethernet.com/downloads/usb-over-ethernet.zip>**

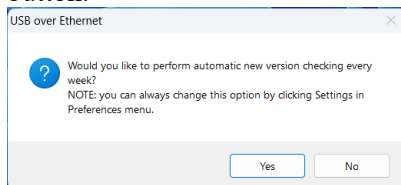
- Once typed into a web browser you should automatically download a .ZIP file.
- Select **“Open file”** once its downloaded.

Step 2.

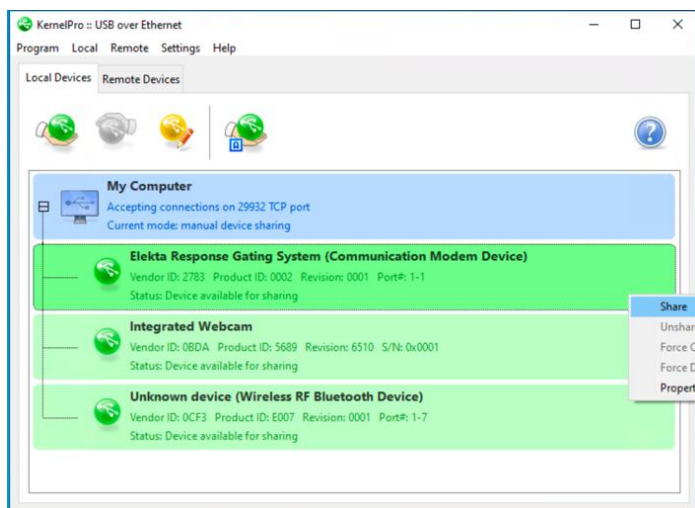




- Once open, double click “**Setup**”
- Follow the prompts to install the software.
- Select “**I accept the agreement**”
- Then click “**Next**” while leaving the settings to default.
- Until you get to “**Finished**”.
- If asked “**Would like to perform automatic new version checking every week?**”, click **No** button.

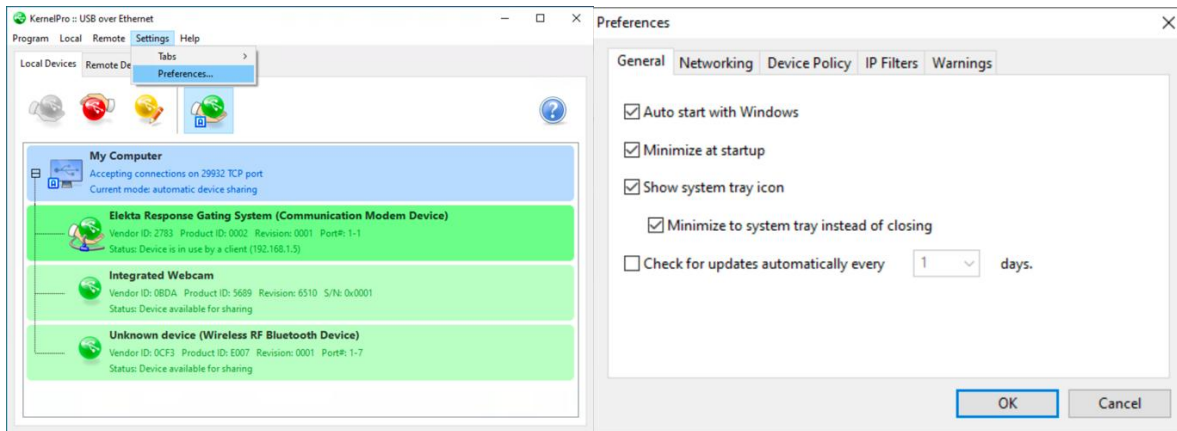


### Step 3.



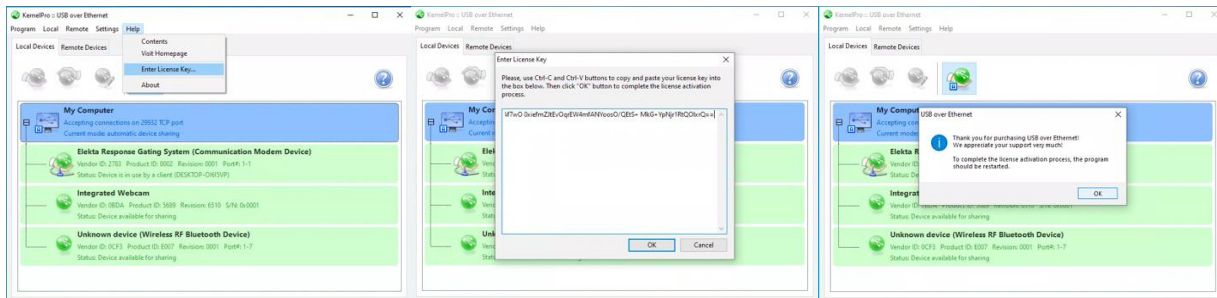
- Once the application starts.
- Locate the **“Elekta Response Gating System (Communication Modem Device)”**
- Please make sure the Gating kit is connected to the Client’s Laptop.
- Right click Elekta Response Gating System and Select **“Share”**

Step 4.



- Finish up by Selecting **“Settings”** on the top.
- Select **“Preferences”**
- Under **“General”** tab make sure the first 4 boxes are selected and the last one turned off.
- Select **“OK”** once you finished.

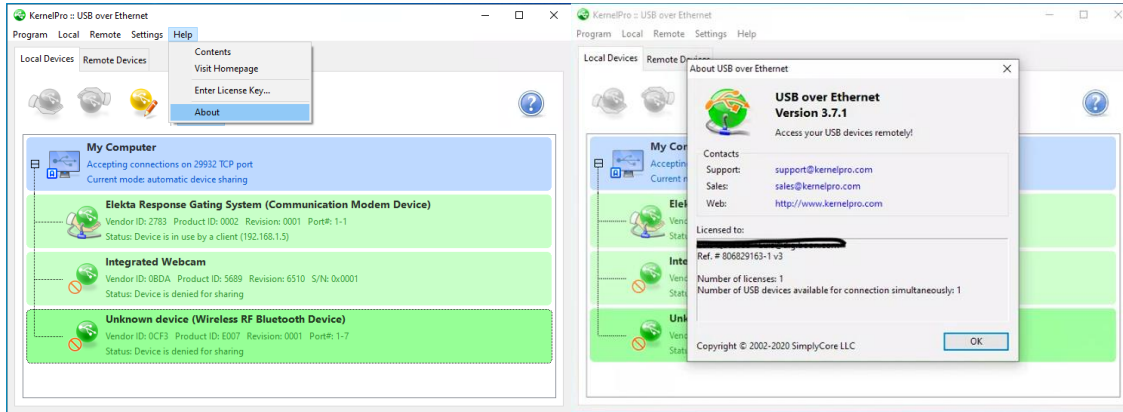
Step 5.



- With the application still open.
- Click on **“Help”** and select **“Enter License Key...”**
- This will open a window that will allow you to copy and paste the Product key or manually type it in.
- Once entered you can Select **“OK”**.
- If done correctly you will get a Prompt asking to restart the application.

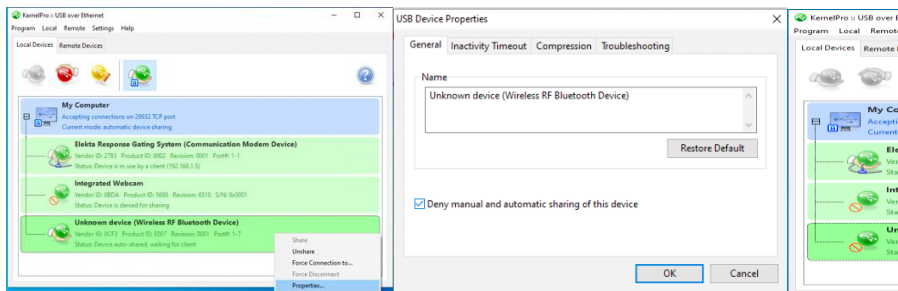
- We recommend doing a restart on the device and log into the **ABC** user account.

Step 6.



- Bring up the application once more by typing **USB over ethernet** on the taskbar text box.
- Select **Open**.
- This is a check to make sure the license key is activated if logged into another account.
- Navigate to **“Help”** on the top and select **“About”**
- Repeat step four if settings didn't transfer over.
- Close out by clicking **“OK”**

Step 7.



- Lastly you can disable the sharing of any other device to mitigate confusion.
- Right click on the device you wish not to share and select **“Properties”**
- Make sure you check the box for **“Deny manual and automatic sharing of this device”**
- You'll see a red icon device to show its disabled.

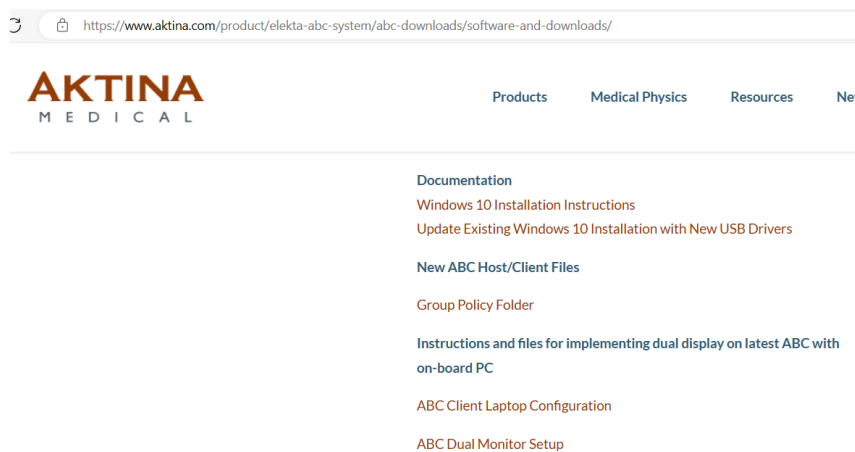
# Setting up the New RDP Icon on the Client PC

## Step 1

- Log into the ABC on Client Laptop.
- Username: ABC
- Password: abc

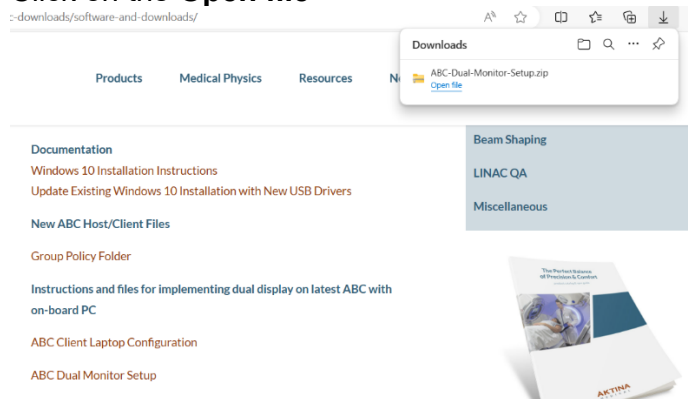
## Step 2

- Open Microsoft Edge.
- Go to <https://www.aktina.com/product/elekta-abc-system/abc-downloads/software-and-downloads/>
- Scroll down the page and find **ABC Dual Monitor Setup**

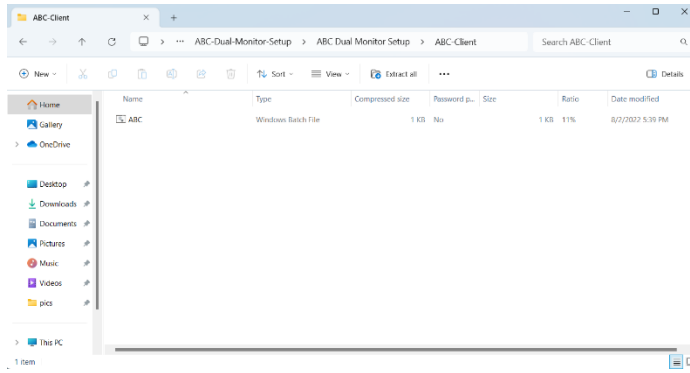


## Step 3

- Double click **ABC Dual Monitor Setup**, this will download the file.
- Click on the **Open file**



- The windows folder shows up. Navigate to ABC-Dual-Monitor-Setup>ABC Dual Monitor Setup>ABC-Client

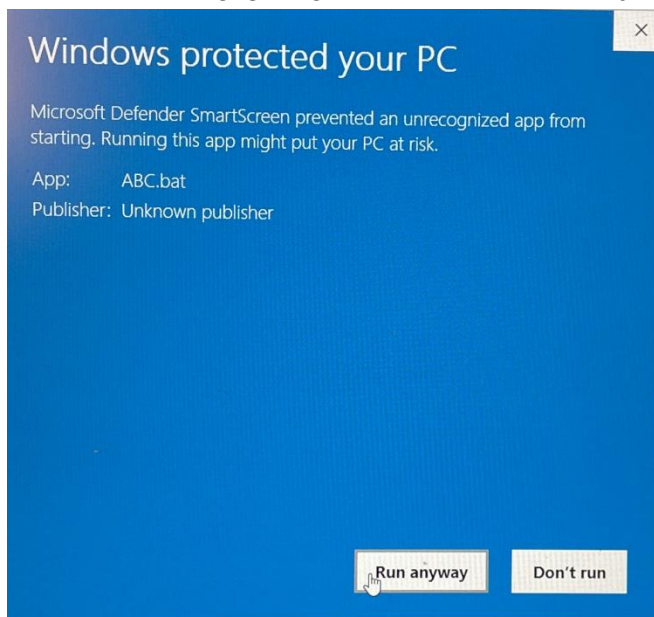


- Copy and paste the ABC.bat file to the desktop

Note: There will be two directories in the zip file: “ABC-host” and “ABC-client”.  
 The “host” is the computer within the ABC cart (**Not Needed for Laptop configuration**)  
 The “client” is the laptop computer that is connected to the host via Remote Desktop.

#### Step.4

- Double Clicking on the ABC.bat file for the first time.
- You’ll be prompted with ”Windows Protect your PC”.
- Left click on “**More Info**” and then click on “**Run anyway**”.

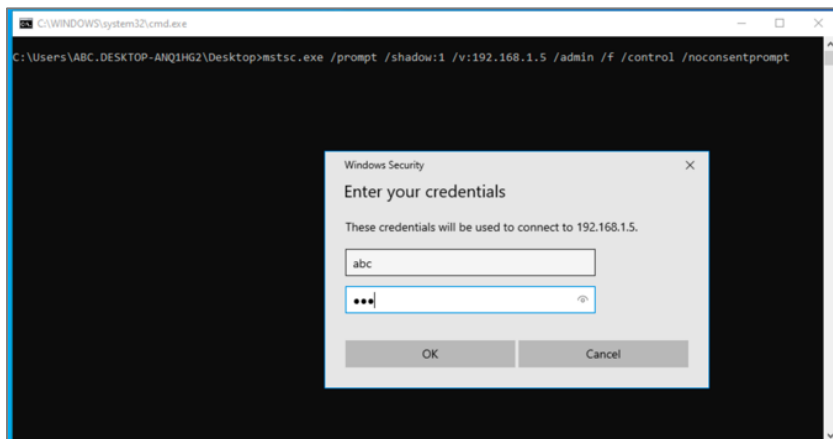


# Testing Shadow RDP

## Step 1

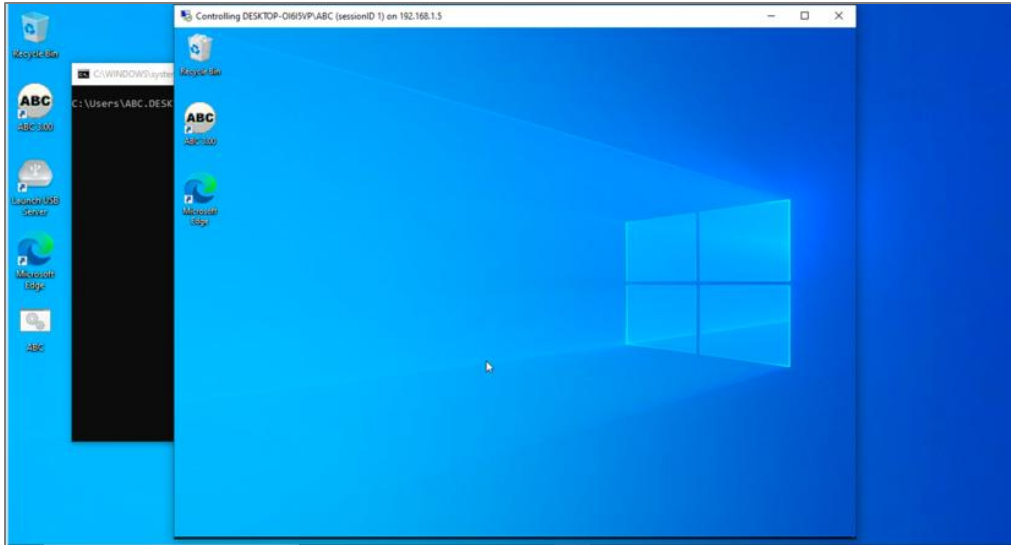
- Connect laptop to ABC Host (ABC Cart) via ethernet cable.
- Turn on ABC Host machine and log on as **ABC administrator**, password **elekta**
- Double click on “**Init**” icon desktop to reboot system.
- After reboot, log on to the ABC Host machine as **abc**, password **abc**

## Step 2



- Log on to laptop user as **ABC**, password, **abc**.
- On the desktop, locate the **ABC** icon and double click.
- Type **abc** on the top box (username) and type **abc** as the password and click “**OK**” or press **enter** on the keyboard.

## Step 3



- You're now able to control ABC Host while still allowing video output on the monitor
- If you get an error because of the session ID or shadow ID. Reboot the ABC Host and log in as ABC, password abc using the Restart shortcut that was made on ABC profile desktop

# Testing Client Connection with Gating Kit

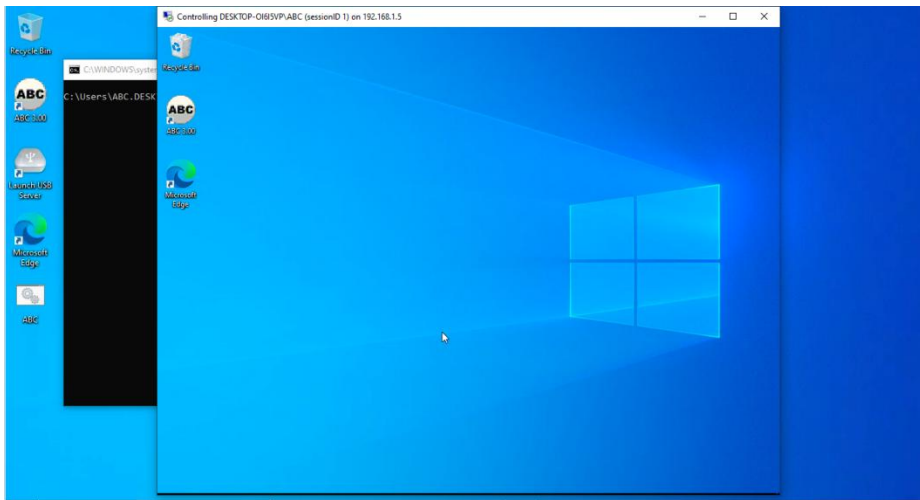
*Verifying Shadow RDP connection.*

Notes:

1. Make sure Gating Kit is connected to the laptop and turned on.
2. Ensure laptop is connected to ABC Host via ethernet cable.

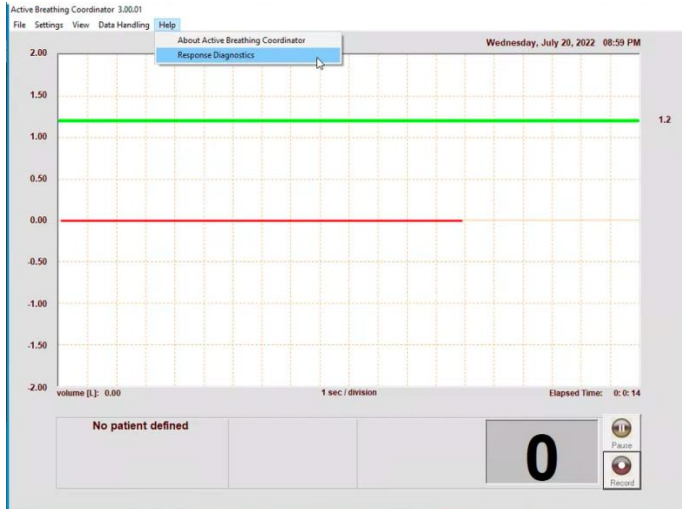
Step 1

- Double click ABC.bat (ABC icon) on the laptop to start connection to ABC Host

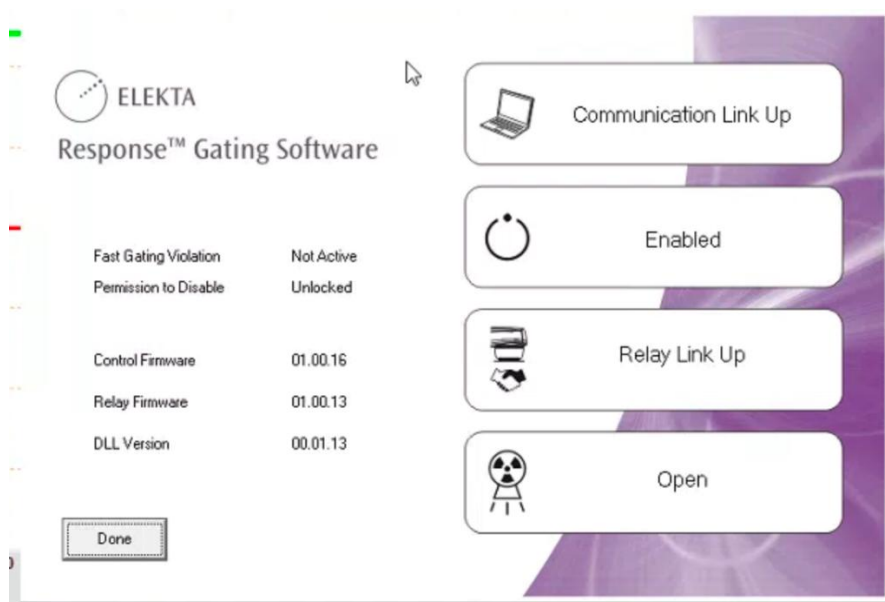


Step 2

- Open ABC 3.0 on host machine
- Skip creating new or loading existing patient.
- Navigate to Help – Response Diagnostics



Verify you see the following:



- Communication Link UP
- Enabled (Note: if not enabled, make sure Gating Kit is on and connected to the laptop)
- Relay Link Up
- Open

## Revision History

Revision	History
00	initial release
01	<ul style="list-style-type: none"><li>• Updated Windows 11 first-time laptop setup instructions and clarified USB over Ethernet product key contact information.</li><li>• Document revised to reflect the current ABC client laptop configuration process.</li></ul>